

## Positive Energy Districts European Network PED-EU-NET

**PED  
EU  
NET**

Laboratório Nacional de Energia e Geologia

### Research Area

Energy in Built Environment

### Contacts

Laura Aelenei

Paço do Lumiar, Street Nº22,  
Edifício Solar XXI  
1649-038 Lisboa, Portugal

Tel.: 351 210 924 600

Fax: 351 217 127 195

[info@lneg.pt](mailto:info@lneg.pt)

Project Funded by:



### Motivation

The COST Action Positive Energy Districts European Network (PED-EU-NET) aims to mobilise researchers and other relevant stakeholders across different domains and sectors to drive the deployment of Positive Energy Districts (PEDs) in Europe through open sharing of knowledge, exchange of ideas, pooling of resources, experimentation of new methods and co-creation of novel solutions.

### Objectives

This COST Action will drive the deployment of PEDs by harmonising, sharing and disseminating knowledge and breakthroughs on PEDs across different stakeholders, domains and sectors at the national and European level.

It will establish a PED innovation eco-system to facilitate open sharing of knowledge, exchange of ideas, pooling of resources, experimentation of new methods and co-creation of novel solutions across Europe.

Additionally, this COST Action will support the capacity building of new generation PED professionals, Early Career Investigators as well as experienced practitioners. It will mobilise the relevant actors from and across Europe to collectively contribute to the long-term climate neutral goal.

PED-EU-NET | COST ACTION CA19126

### Positive Energy Districts European Network

[KNOW MORE](#)Funded by the Horizon 2020 Framework Programme  
of the European Union

Partnership

Fraunhofer ISE (Coordinator)  
LNEF (Vice-coordinator)

More than 130 partners

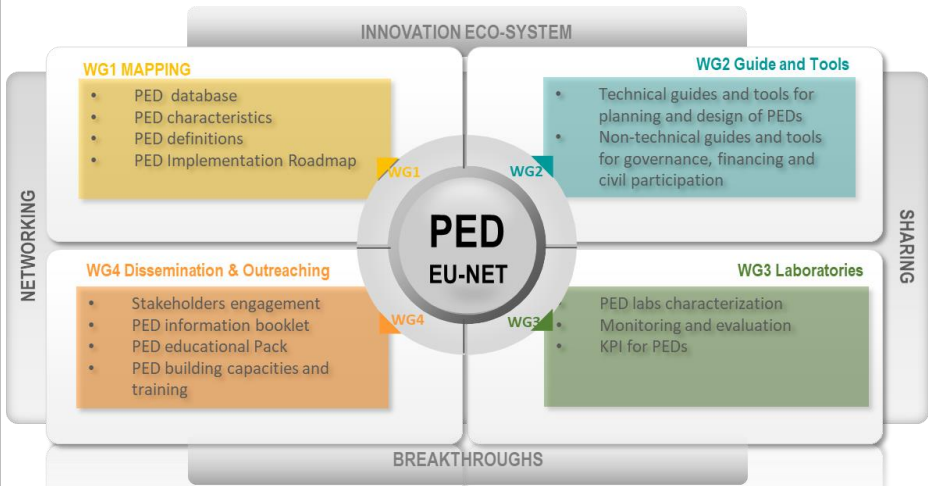
Web page

<https://pedeu.net>

Project Duration

2020 - 2024

Methodology and Work plan



Direct impacts

- ✓ Academically: increased number of researchers, projects and scientific publications;
- ✓ For cities and communities involved in this COST Action, broadened knowledge and increased capacity;
- ✓ In terms of PED workforce, the training opportunities for young practitioners, STSM;
- ✓ For the general public of the cities, increase in awareness and the promotion of public-private-people partnerships.

Indirect impacts

- ✓ Implementation of Set Plan 3.2 through collaboration with EERA JPSC, Annex 83 and JPI UE;
- ✓ Engaging city administration, helping to sow the seeds of PED concept and strength the willingness of PED uptake in cities;
- ✓ Contribution for the UN Sustainable Development Goals SDG;
- ✓ Major potential in scientific, technological, social, economic and regulatory innovation and breakthroughs.

Facts and Numbers

Action Start Date	10.09.2020
Action End Date	09.09.2024
Countries	40
Participants	~180
Organisations	~ 130